

## **Road to Indy IMS Test Regulations:**

The following information pertains to logistics for the Road to Indy Test Scheduled for October 29<sup>th</sup> and 30<sup>th</sup> at the Indianapolis Motor speedway Road Course.

Per the Schedule, Load in will start at 1:00 PM Thursday October 28<sup>th</sup>.

Enter the Speedway from 16<sup>th</sup> Street at the Main entrance, please follow the Map provided, (you must turn right after you get through the tunnel).

We will park transporters in the south Gravel lot that is used for Indy Lights during the Month of May.

We will be using the F1 Garages and Pit Lane.

Teams participating in Multi Series will be garaged together.

**Track Walk:** 3:00 PM Thursday, **walk only**, no vehicles, scooters, golf carts, or any other form of transportation.

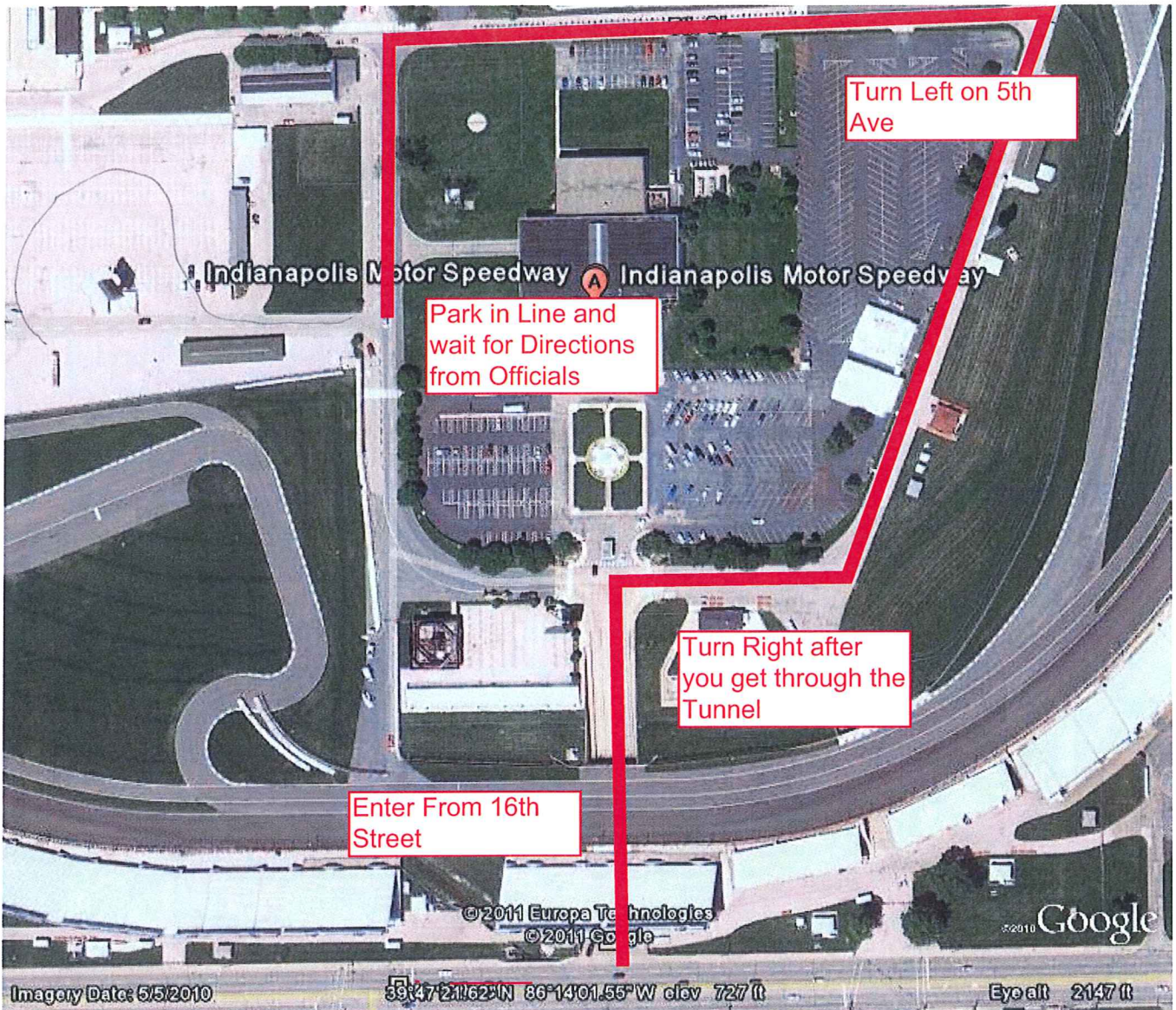
**Drivers meeting:** 8:00 AM Friday in Suite # 501 directly above the F1 garages , this will include all drivers from all series in the same meeting.

**Track Distance:** 2.5134 Miles.

**Pit Lane Speed Limit:** 45 MPH for all series, starting and ending at the Yellow Cones.

**Fuel:** Indy Lights Fuel station will be operating anytime Thursday, and 8:00 – 10:00 AM Friday and Saturday. Please call Louie Parsons at 317-270-4752 if you have any questions.

55 Gallons will be provide to each Indy Lights entry.



Turn Left on 5th Ave

Indianapolis Motor Speedway Indianapolis Motor Speedway

Park in Line and wait for Directions from Officials

Turn Right after you get through the Tunnel

Enter From 16th Street

© 2011 Europa Technologies © 2011 Google

Google

Imagery Date: 5/5/2010

39°47'21.62\"/>

Eye alt 2147 ft



SOUTH BLDG. TRACK SIDE

AAS (4) CARS	AAS	AAS	Belardi (4) CARS	Belardi	Belardi	MOORE (1) CAR	Jensen (2) CARS	SCHMIDT (2) CARS	FIRE	FIRE	FIRE
1	2	3	4	5	6	7	8	9	10	11	12

MIDDLE BLDG. TRACK SIDE

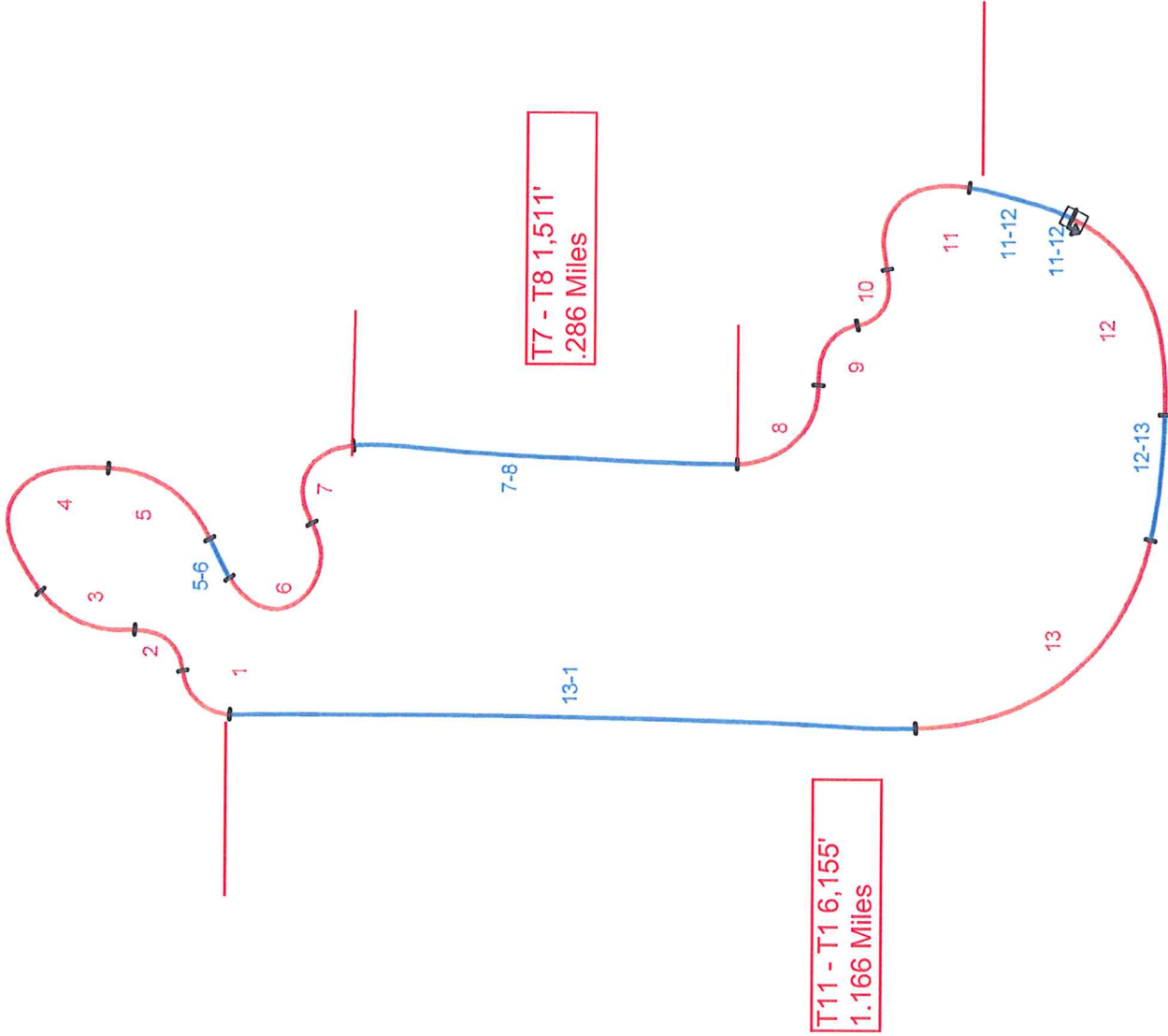
FIRESTONE	HERTA (1) CAR	Younessi/ Conquest (1) CAR	Linares (1) CAR	Pelfrey (2) CARS	MDL Accelerace (1) CAR	JDC (3) CARS	JDC	AIM (2) CARS	Pabst (2) CARS	TBA	GOODYEAR
13	14	15	16	17	18	19	20	21	22	23	24

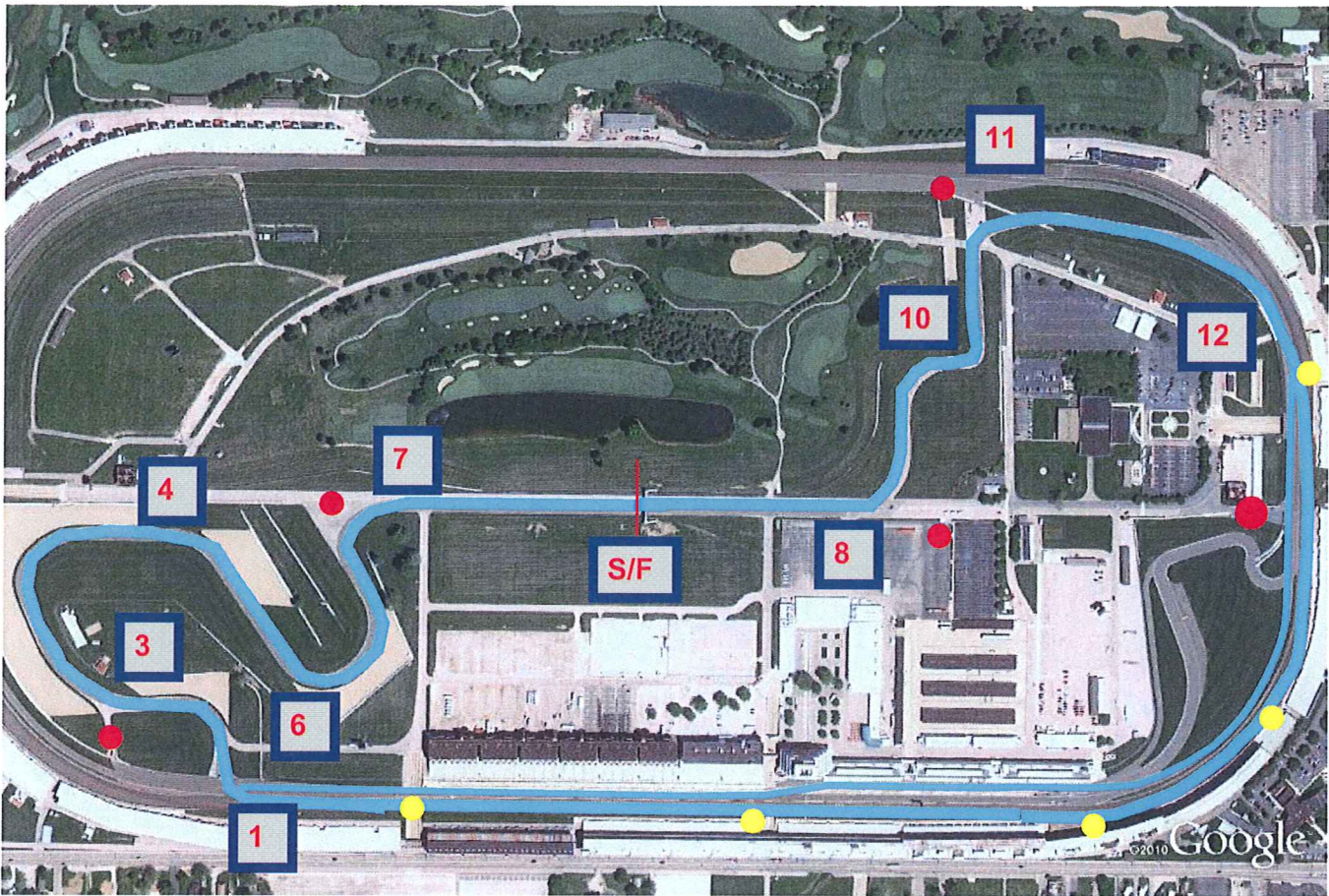
NORTH BLDG. TRACK SIDE

25	26	27	28	29	30	31	32	33	34	35	36

ROAD TO INDY OPEN TEST

OCT. 28/29 2011





● Track Lights

● Response Vehicles

## Corner Stations

